

# CHERRY BLOSSOM PANELS

## OBJECTIVE

Designer came up with this rendering to create a custom fabric for wall upholstery of dining booths in a high end restaurant to emulate cherry blossom flowers.

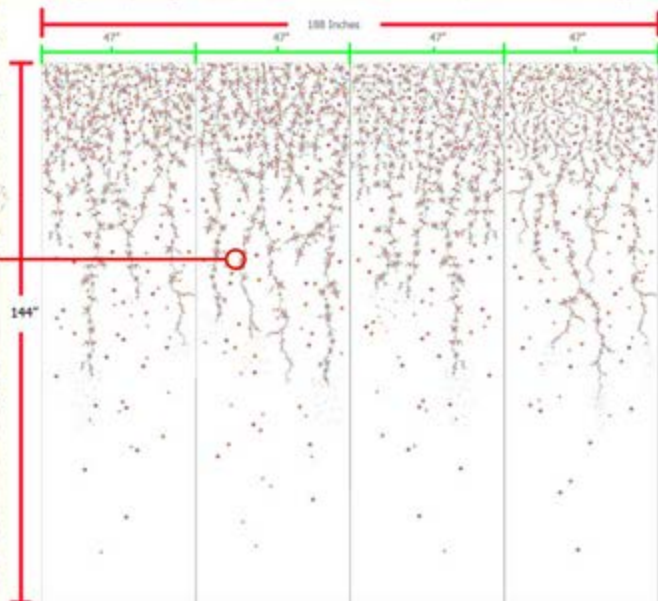


## CONSULTATION

Taffard worked with the designer to come up with design, stitch style, colors and scale to the client's specifications.

Based on client's requirements, Taffard combined 4 fabric widths and designed the embroidery so that it does not cross over from selvage to selvage.

Each finished panel was 188 inches wide and 144 inches long.



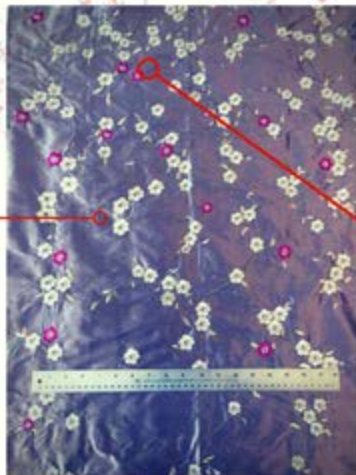
## SAMPLE DEVELOPMENT

Numerous CADs, embroidery samples and backing samples were submitted for approval prior to production.

Content: 100% silk fabric base(Athens) with paper backing.

Quantity: 5 curved wall niches required for wall upholstery of dining booths in a high end restaurant.

Here you can see a sample embroidery panel with the zoomed in shot approved by our client.



## COMPLETION

One large panel is made up of 4 widths of 47" x 144".

Fabric was made in India, paper backed in the USA and shipped to Macau

Lead Time: 3 months(12 weeks) from beginning of design phase to delivery

Used in a restaurant in the Venetian in Macau

Here you can see the final installation image sent by client

Price on request.

